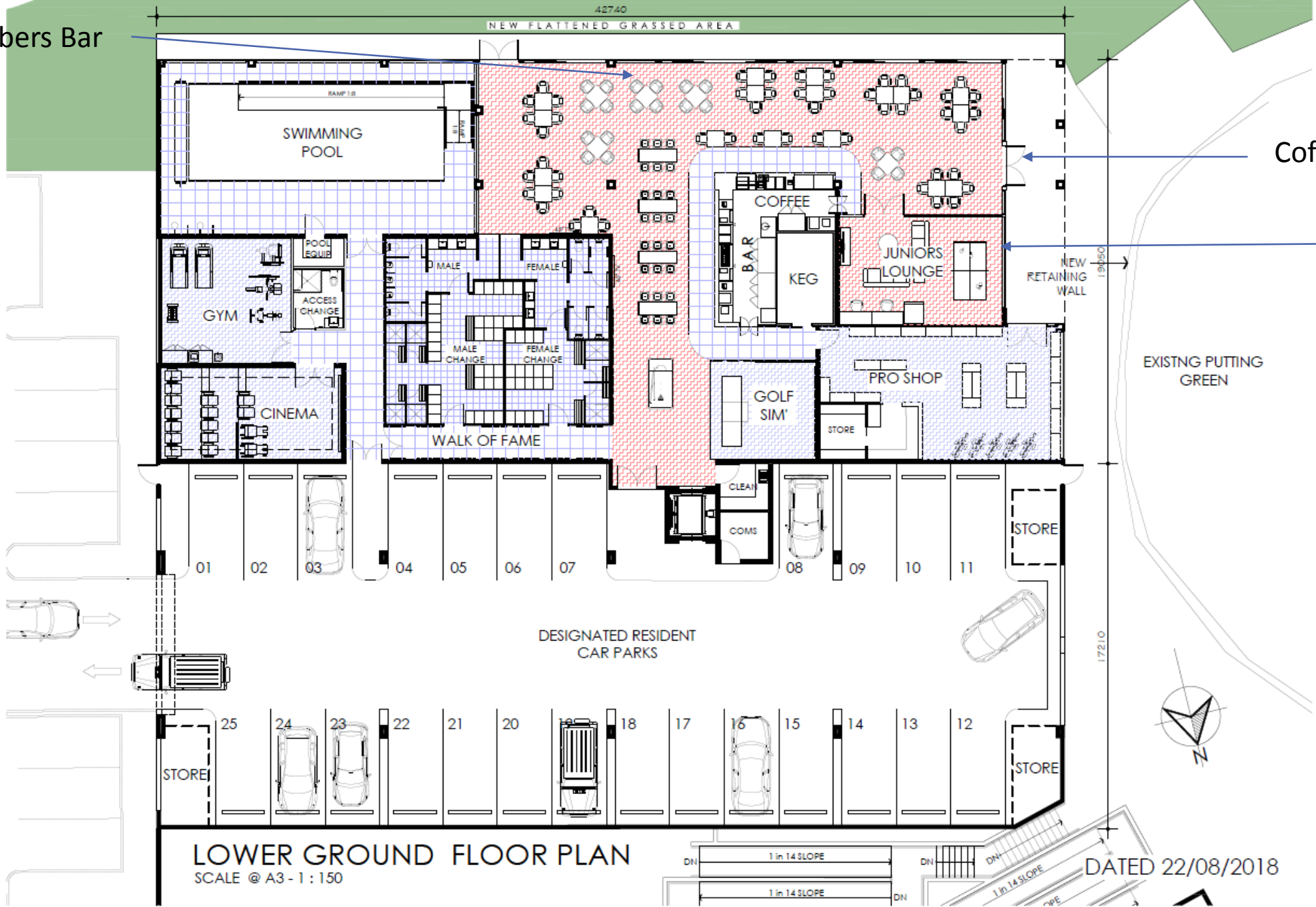




Flagstaff Hill Golf Club

New Plans for Club House and Penthouse Apartments

Members Bar



Coffee Lounge

Junior Room

LOWER GROUND FLOOR PLAN
SCALE @ A3 - 1 : 150

DATED 22/08/2018

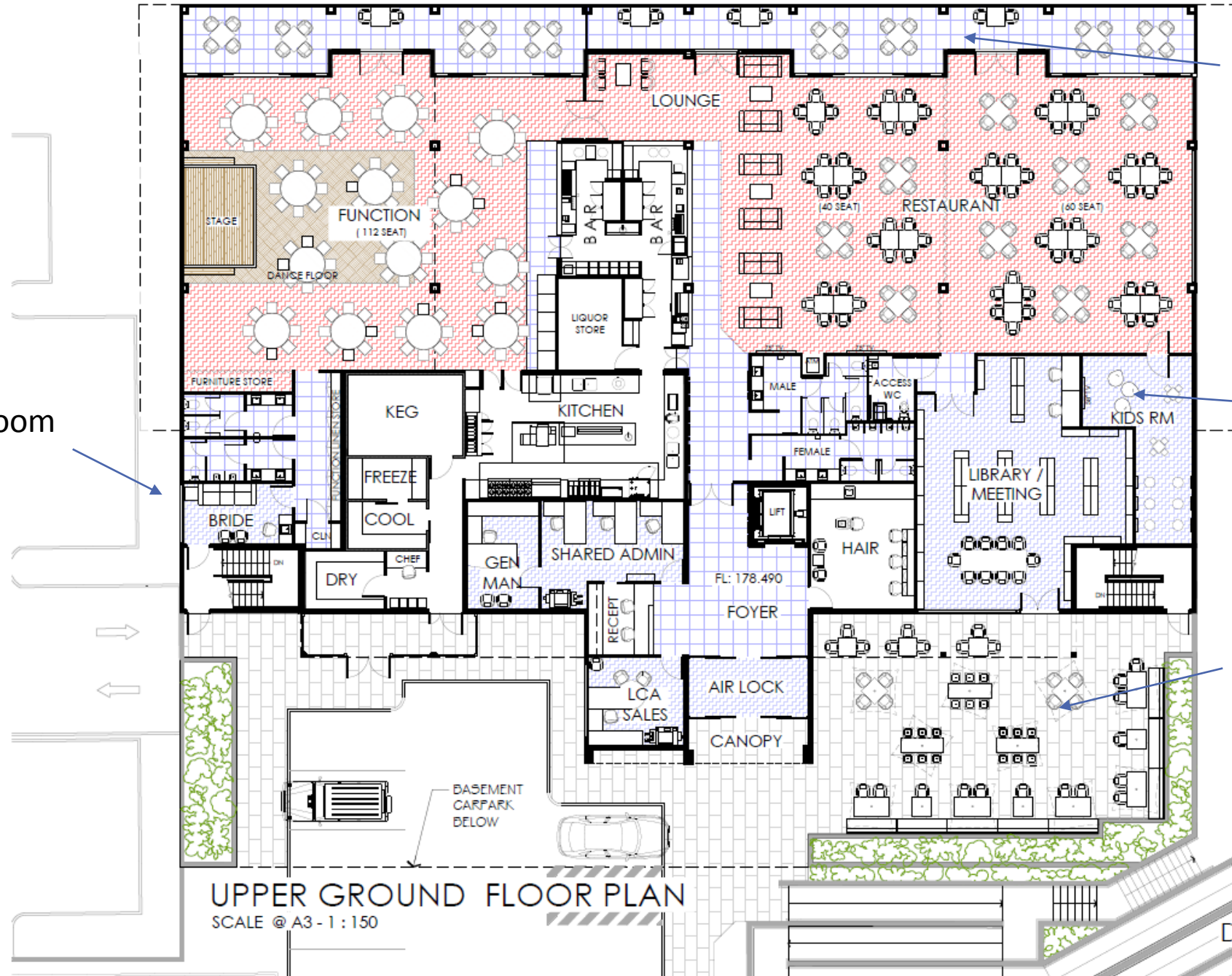


Green Room

Balcony

Kids Room

Outdoor Setting



UPPER GROUND FLOOR PLAN
SCALE @ A3 - 1 : 150

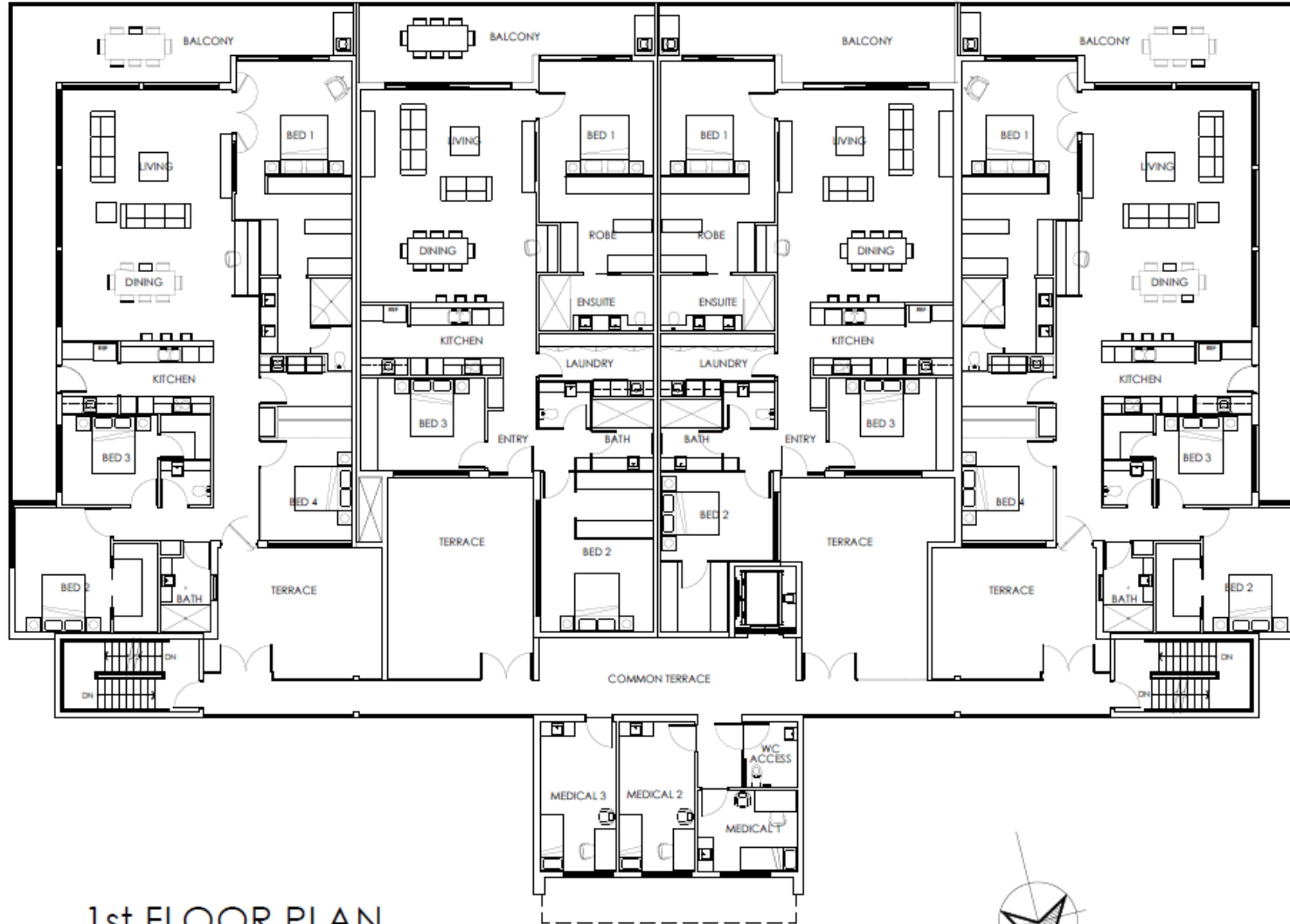
DATED 22/08/2018

LIVING 207
BALCONY 56
TERRACE 28
TOTAL 291

LIVING 179
BALCONY 26
TERRACE 39
TOTAL 244

LIVING 175
BALCONY 26
TERRACE 38
TOTAL 239

LIVING 207
BALCONY 56
TERRACE 28
TOTAL 291



1st FLOOR PLAN
SCALE 1 : 150



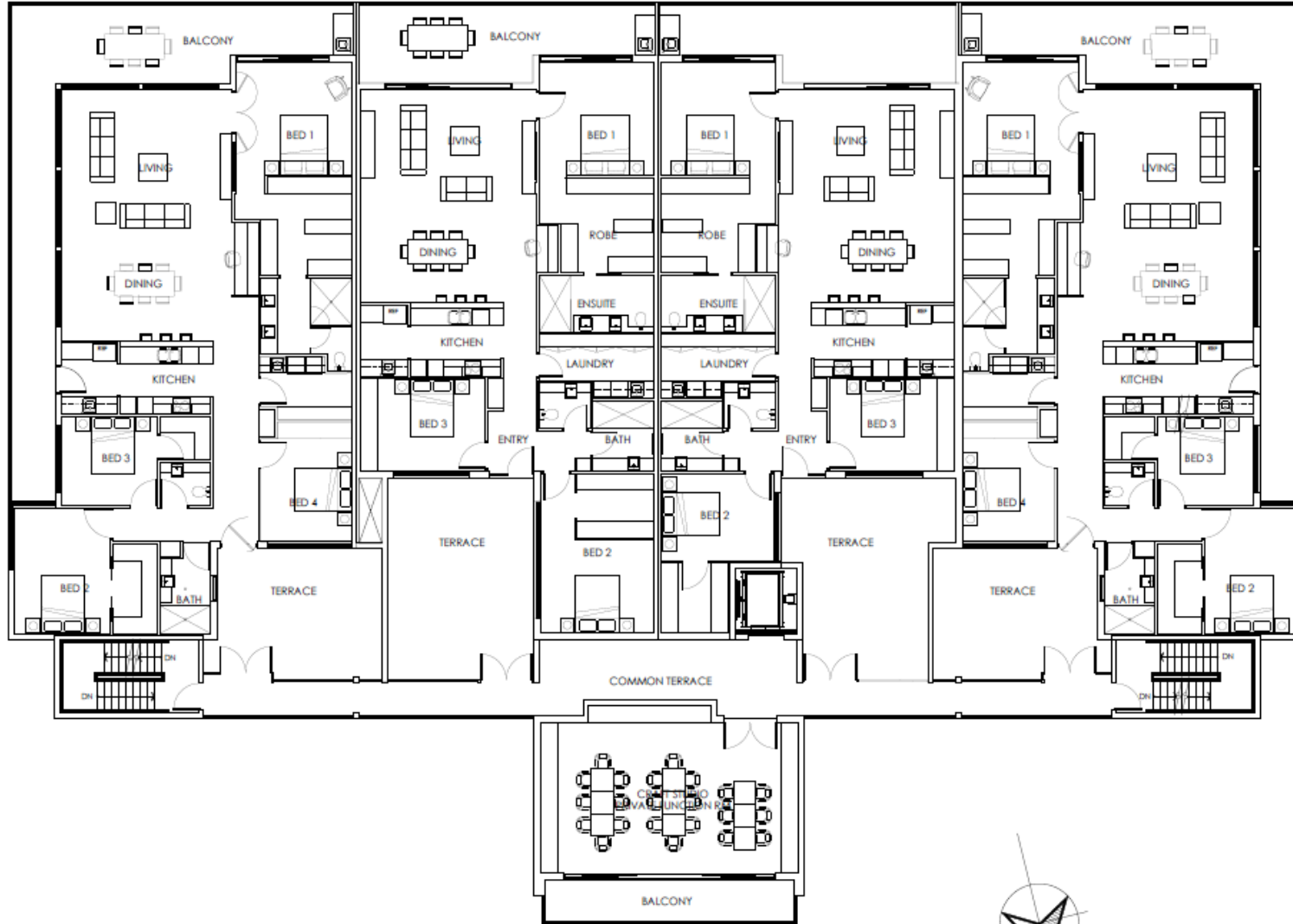
DATED 13/08/2018

LIVING 207
 BALCONY 56
 TERRACE 28
 TOTAL 291

LIVING 179
 BALCONY 26
 TERRACE 39
 TOTAL 244

LIVING 175
 BALCONY 26
 TERRACE 38
 TOTAL 239

LIVING 207
 BALCONY 56
 TERRACE 28
 TOTAL 291



2nd FLOOR PLAN
 SCALE 1 : 150

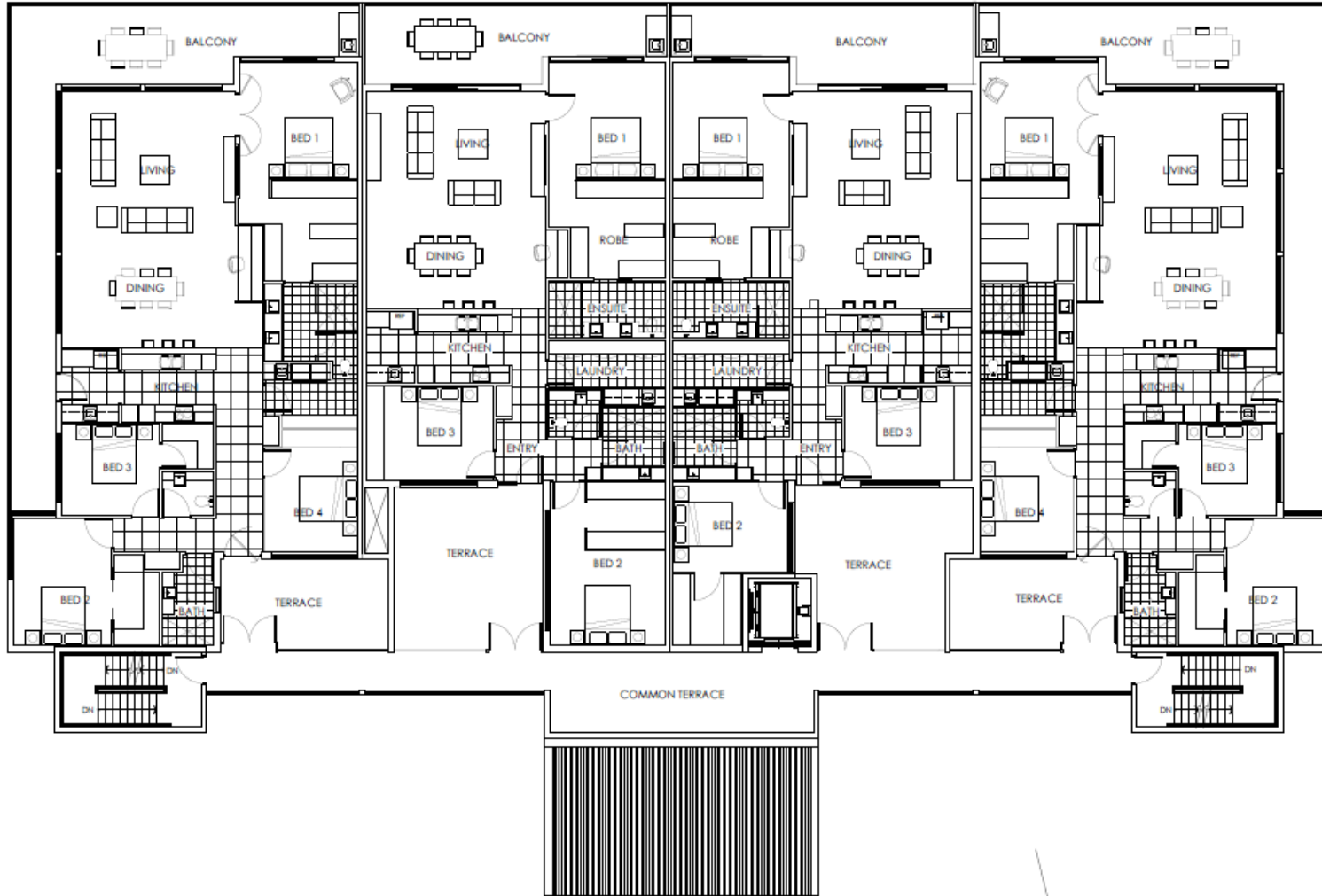
DATED 13/08/2018

LIVING 207
BALCONY 56
TERRACE 18
TOTAL 282

LIVING 179
BALCONY 26
TERRACE 30
TOTAL 235

LIVING 175
BALCONY 26
TERRACE 31
TOTAL 232

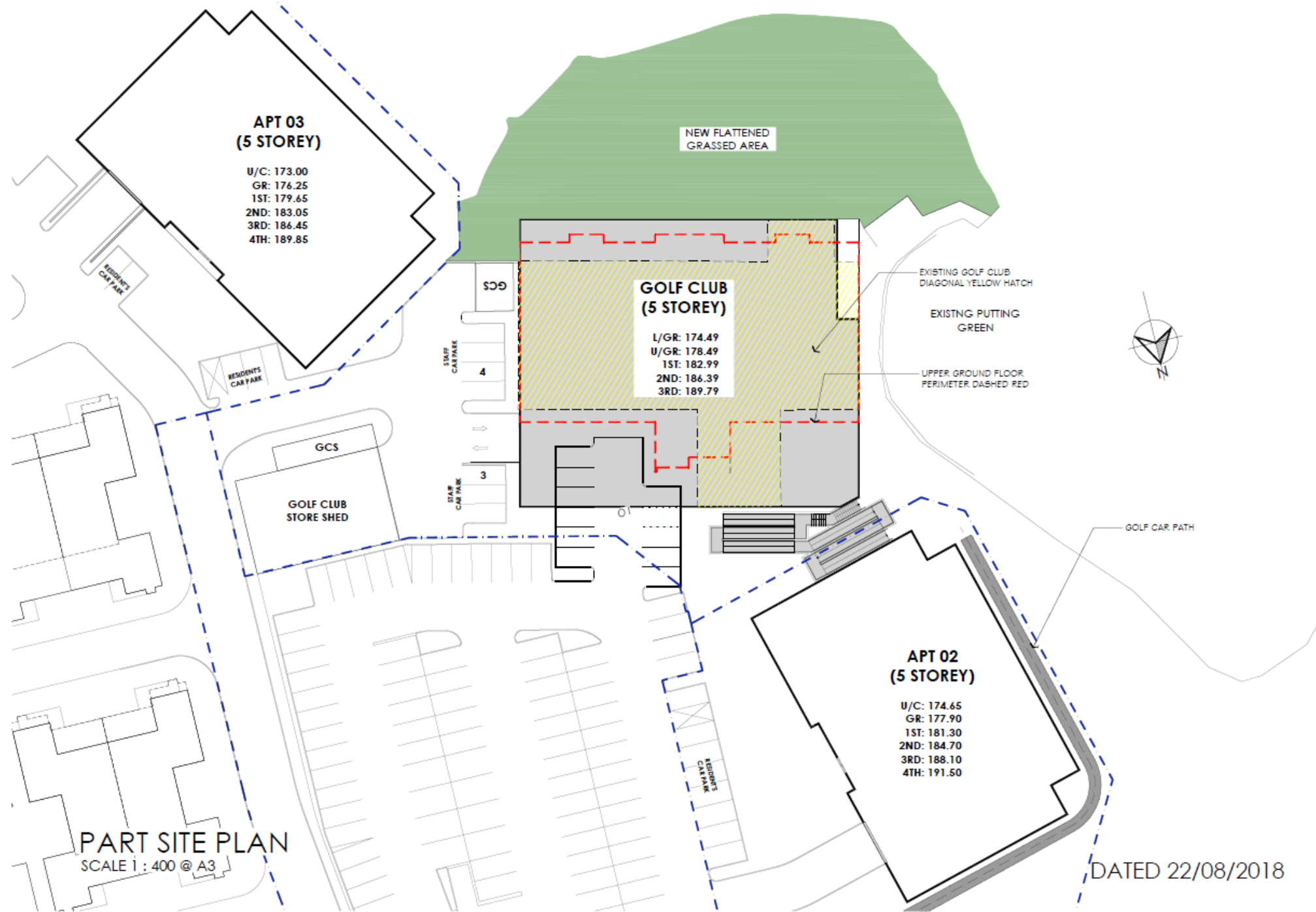
LIVING 207
BALCONY 56
TERRACE 19
TOTAL 282



3rd FLOOR PLAN
SCALE 1 : 150



DATED 13/08/2018



**APT 03
(5 STOREY)**

U/C: 173.00
GR: 176.25
1ST: 179.65
2ND: 183.05
3RD: 186.45
4TH: 189.85

NEW FLATTENED
GRASSED AREA

**GOLF CLUB
(5 STOREY)**

L/GR: 174.49
U/GR: 178.49
1ST: 182.99
2ND: 186.39
3RD: 189.79

**APT 02
(5 STOREY)**

U/C: 174.65
GR: 177.90
1ST: 181.30
2ND: 184.70
3RD: 188.10
4TH: 191.50

PART SITE PLAN
SCALE 1 : 400 @ A3

DATED 22/08/2018